

# 9000GLU



## Installation Instructions



Donovan Enterprises • 2951 S.E. Dominica Terrace • Stuart, Florida 34997  
1-800-327-8287



# 9000GLU

## Head Assembly

### Installation Instructions

#### (Rollerbar & GL Crank Assembly)

# Step 1

#### Required Parts:

1	Extruded Roller Bar	2	3/4" Shaft Collar
1	3/4" Extension Shaft with Sprocket	1	3/4" Extension Shaft
1	9000GL Control Box Assembly	1	Wind Deflector (2 sections)
1	Chain Guard, Upper	1	Chain Guard, Lower
3	Chain Guard Bracket	2	Bearing Plate w/ 3/4" Flange Bearing
1	Mounting Instructions, Operating Manual & Warranty		

#### Before beginning installation:

- 1) Check parts bags for correct contents. Contact your dealer if parts are missing. **THE LAST PAGE CONTAINS THE REFERENCE GUIDE FOR THE HARDWARE YOU WILL NEED TO INSTALL YOUR SYSTEM.**
- 2) Read through instructions for entire system to get a general idea of how each component is mounted and how the components fit together.

#### Choosing the Mounting Location

In general, the rollerbar should be mounted on top of the cab shield and as far forward as possible so that the pivot arms will be less likely to be damaged by loaders. If head assembly is mounted too far forward, however, the pivot arms may interfere with the truck doors.

**Exceptions:** Trucks with vertical stacks. Vertical stacks may be in the way of the pivot arms if the rollerbar were to be mounted forward of the stack(s). Simply shortening or re-aligning the stack(s) may solve the problem. If the stack(s) still get in the way, it may be necessary to mount the rollerbar to the rear of the stack(s). If there is not room to mount the rollerbar on the cab shield behind the stacks, it will need to be mounted on top of the side board pockets to the front of the body.

#### Installing the Bearing Plates (Optional)

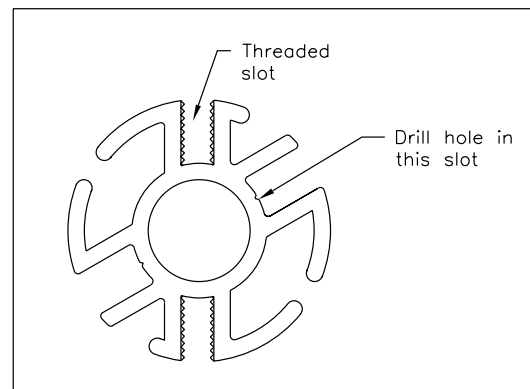
- 1) Once the mounting location has been determined, you may either install the included bearing plates using the 3/8" x 1 1/2" bolts, flat washer, split lock washer, and nuts, or use the bearing plates as templates to drill the necessary mounting hole into the cab shield sides or other suitable location.
- 2) If you choose to use the bearing plates as templates and mount directly to the cab shield, remove the 3/4" bearing from both bearing plates and bolt them in place on the cab shield. **Note:** The bearing plates or cab shield holes should be exactly opposite of each other to avoid the tarp bunching to one side during use.
- 3) Be sure there is enough clearance between the rollerbar and the cab shield to roll-up the entire tarp.

#### Mounting the GL control box

- 1) Determine suitable position for mounting GL control box to front driver's side of body. Keep in mind that the top sprocket and bottom sprocket must align vertically without any obstacles to obstruct movement of the chain or crank handle.
- 2) Mount control box to side wall of body using 3/8" x 1 1/2" bolts, lock nuts, and flat washers.

#### Mounting the Rollerbar

- 1) Measure from the inside of one bearing plate to the inside of the other. Cut the roller bar one inch shorter than this length.
- 2) Drill a 5/16" hole, 1/2" from each end of the rollerbar. Start the hole in one of the smooth-sided slots, **not** a threaded slot (see Figure 1).



- 3) Slide the extension shaft through the curb-side bearing plate and into the roller bar. Line up the holes in the roller bar with the hole in the extension shaft and secure with the 5/16" carriage bolt, flat washer, and lock nut.
- 4) Install a 3/4" shaft collar onto the extension shaft on the outside of the 3/4" bearing to prevent lateral movement of the roller bar.
- 5) Slide the 3/4" shaft collar on the extension shaft with the sprocket and then slide the extension shaft through the bearing plate and into the roller bar. Align the sprocket by sliding the shaft into or out of the rollerbar such that when the chain is installed, it is going straight up from the control box to rollerbar sprocket. Tighten shaft collar set screw.
- 6) Using the hole you drilled in step 2 as a guide, drill a 5/16" hole through the sprocket shaft. Secure the shaft to the rollerbar using a 5/16" x 2 1/2" carriage bolt, flat washer, and lock nut.
- 7) Assemble chain around top and bottom sprocket, removing unnecessary links as needed to adjust chain length. Once desired length and tension are achieved, fasten chain together using included master chain link.

## Installing the Wind Deflector (Optional)

Install the wind deflector halves to the cab shield using the 3/8" x 1 1/2" bolts, flat washers & lock nuts. Mount the wind deflector forward of the rollerbar allowing enough space between the wind deflector and the rollerbar for the tarp when it is fully rolled up. One or both halves may need cutting to fit the width of the cab shield. It may also be necessary to cut notches in the wind deflector for the cab shield support braces.

## Installing the Chain Guard

- 1) Entire chain guard assembly can be welded together and to truck. If welding skip the rest of this section. If bolting, proceed to step 2.
- 2) Mount chain guard by overlapping upper chain guard over lower chain guard and attaching them together using 3/8" x 1/2" bolts, lock nuts, and six 1/4" self drilling screws
- 3) Lower chain guard attaches to control box with 1/4" by 1/2" bolts and lock washers.
- 4) Secure chain guard to truck body with chain guard brackets using the 1/4" self-drilling screws (2 per bracket).



# 9000GLU Pivot Installation Instructions **Step 2**

## Contents of Kit:

- 2 Underbody Pivot Arm Mount assemblies

## Installing the underbody pivot arm mounts

- 1) To find the pivot point, pull one tape measure from point "A" and a separate tape measure from point "B". Next, cross the tape measures at the bottom-middle of the truck body where the two measurements are equal. Mark the spot beneath where they cross. This is your pivot point. (See Figure 1)

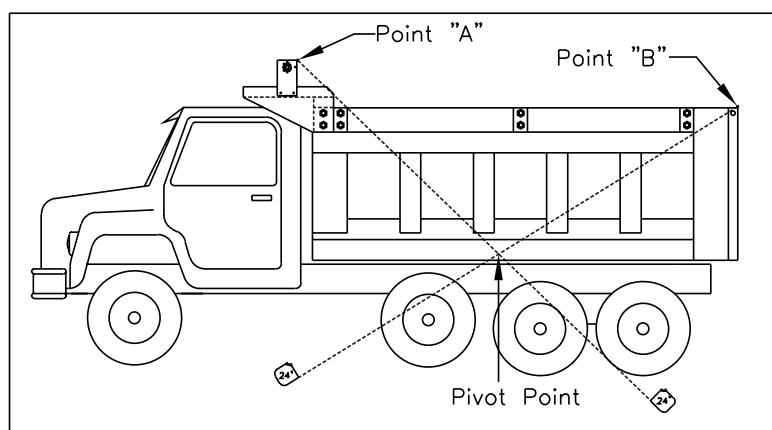


FIGURE 1

- 2) Use the underbody spring assembly as a guide to determine the hole position for mounting. Ensure the center of the mounting plate is aligned with the pivot point as shown in figure 1. Drill two 9/16" holes in line with the holes in the pivot mount.
- 3) Bolt the pivots to the box using the included 1/2" x 2 1/2" bolts, flat washers, and lock nuts (the head of the bolt must be on the outside, and the washer and nut on the inside.) **Note: the pivots are directional** (Figure 2 shows the driver's side pivot assembly)

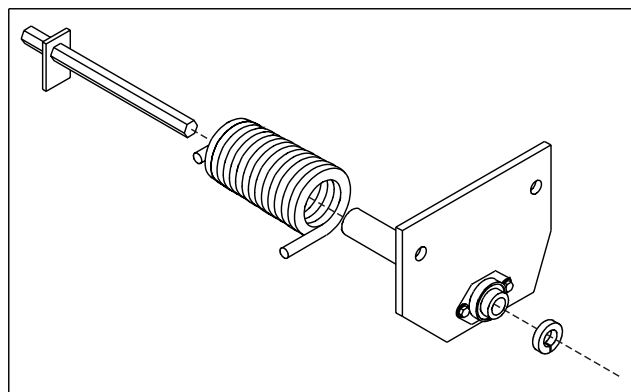


FIGURE 2



## 9000GLU

### Step 3

### Pivot Installation Instructions

#### Contents of Kit:

- |   |                  |   |                        |
|---|------------------|---|------------------------|
| 2 | Upper Pivot Arms | 1 | Rear Cross Piece (RCP) |
| 2 | Pivot Arm Rests  |   |                        |

#### Installing the Pivots Arms

- 1) Install the lower pivot arms on the hex shaft of the underbody pivot arm mounts. Insert and tighten the 5/16" x 1/2" set screw included in the hardware.
- 2) Slide one of the upper pivot arms into a lower arm. Adjust the arm length until the corner rests on the desired landing point at the back of the box and at the head assembly. If the upper arm is too long, cut both upper arms to allow at least 2 feet of upper pivot arm sticking into the lower pivot arm. (See figure 1)
- 3) Slide the other upper pivot arm into the lower pivot arm (make sure that both arms end up the same length).
- 4) Drill two 3/8" holes through each lower arm where the upper and lower arms overlap. Secure the upper and lower arms using the T-nuts and T-bolts included in the hardware kit.

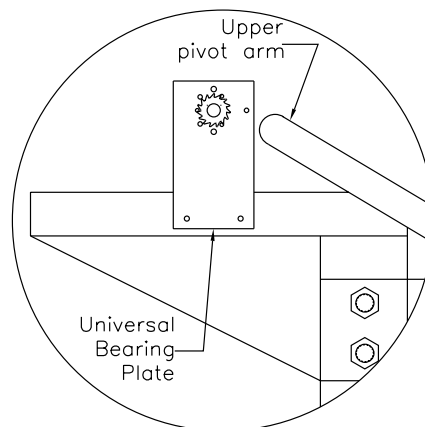


FIGURE 1

- 5) Measure the distance between the upper arms as in Figure 2. Cut one end of the rear cross piece 4" shorter than the distance measured as Dimension "A" in Figure 2.
- 6) Slide the ends of the rear cross piece (RCP) over the upper pivot arm ends.
- 7) Drill a 3/8" hole through each end of the rear cross piece and upper arm bends.

#### Installing the Tarp

- 1) In order to ensure your system is aligned as desired and to determine the mounting position of the pivot arm rests, it is recommended to install the tarp at this time.
- 2) Thread the tarp spline into the aluminum rollerbar. (Make sure to remove excess spline or it may hinder the system's operation).

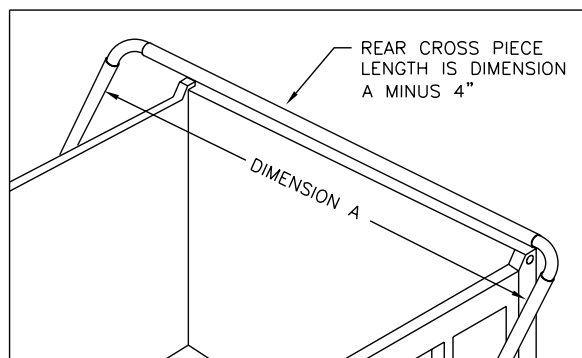
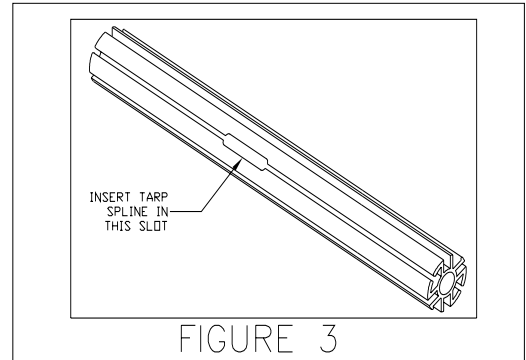


FIGURE 2

- 3) Thread the tarp pocket (sewn into the tarp) onto the RCP.
- 4) Center the tarp on both aluminum roller bar and rear cross piece.
- 5) Bolt the Rear Cross Piece back on to the 90<sup>0</sup> bend in the upper arm using T-nuts and bolts.
- 6) Check all mechanism bolts and screws for security.

**7)NOTE: Donovan extruded aluminum rollerbars have a 4 inch slot milled out in the middle so that a tarp can be easily installed even if the tarping mechanism is already assembled. Simply feed the tarp in, one end at a time from the middle out. This allows quick and easy installation even if there is a small space between the rollerbar and each bearing plate.**



### Installing the Pivot Arm Rests

- 1) Unwind the tarp so that the system is in the “covered” configuration.
- 2) Position the pivot arm rests so that upper arms rest evenly and do not make contact with the tailgate or any other part of the dump body.
- 3) Weld or bolt pivot arm rests into place.

## 9000 GLU Hardware Kit

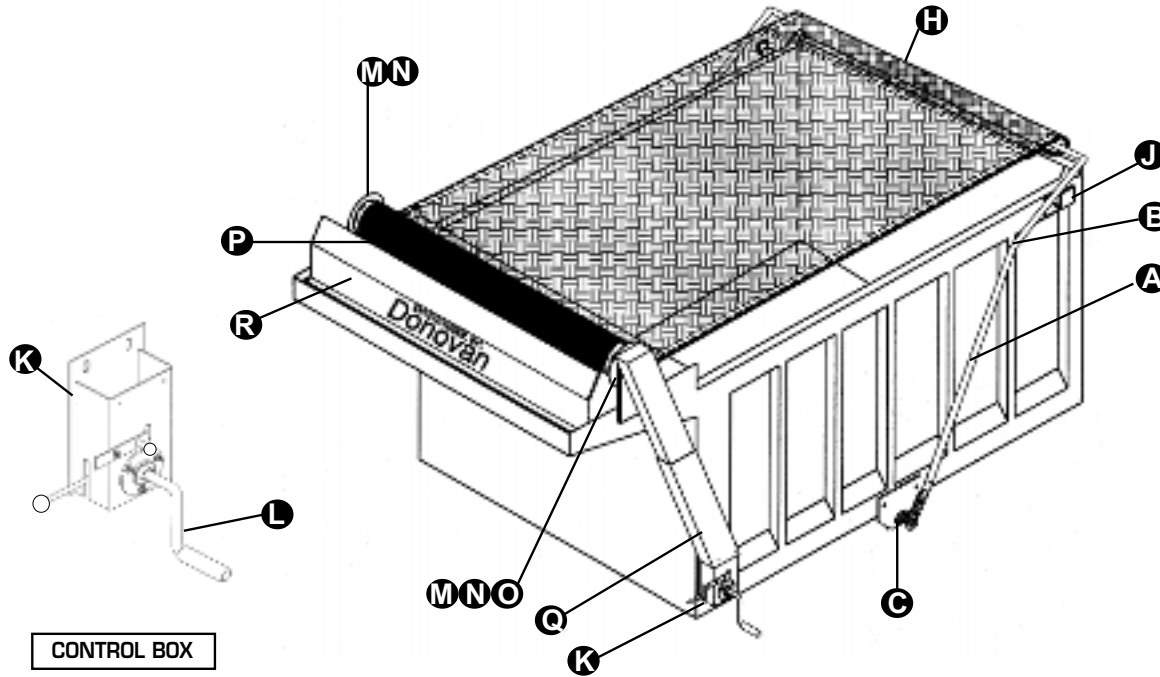
Description	QTY.	Part #
<b><u>Bearing Plate Mounting Hardware</u></b>		
Universal steel bearing plate assembly	2	3678
3/8" x 1 1/2" Bolt	4	2464
3/8" Hex nut	4	2873
3/8" Flat washer	4	2875
3/8" Split lock washer	4	2872
<b><u>Wind deflector Hardware</u></b>		
3/8" x 1 1/2" Bolt	4	2464
3/8" Lock nut	4	2874
3/8" Flat washer	8	2875
<b><u>Pivot Mount Hardware</u></b>		
1/2" x 2 1/2" Bolt	4	287
1/2" Lock nut	4	2877
1/2" Flat washer	4	2878
<b><u>Rear Cross Piece to Upper Arms</u></b>		
1/4" T nut	2	1915
1/4" Allen head shoulder bolt	2	1917
<b><u>Upper Arms to Lower Arms</u></b>		
1/4" x 1 3/4" T nut	4	1915
1/4" Allen head shoulder bolt	4	1917
<b><u>Miscellaneous</u></b>		
Chain, #40 x 10'	1	793
Sprocket shaft assembly 40A, 18" x 3/4"	1	2403
<b><u>Rollerbar</u></b>		
3/4" x 4" Extension shaft	1	2838
5/16" Lock nuts	2	2868
5/16" x 2 1/2" Carriage bolt	2	373
5/16" Flat washer	2	2867
3/4" Shaft collar	2	40
<b><u>GL Control Box</u></b>		
3/8" Flat washer	6	2875
3/8" x 1 1/2" Bolt	3	2464
3/8" Lock nut	3	2874
<b><u>Chain Guard Mounting Hardware</u></b>		
1/4" x 1/2" Bolt	2	1911
1/4" Lock washer	12	2458
1/4" x 3/4" Self drilling screws	12	3299
3/8" x 1/2" Bolt	2	1913
3/8" Lock nut	2	2874

**Any Questions? Call us at 1-800-327-8287**

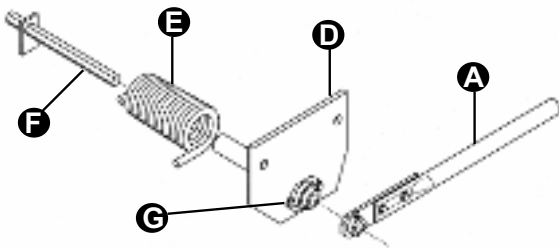


# 9000GLU

## COVERING SYSTEMS



**CONTROL BOX**



**UNDERBODY SPRING ASSEMBLY**

### Mounting Hardware

Description	Qty	Part #
Bolt, hex, 3/8" x 1 1/2"	11	2464
Washer, lock, 3/8"	11	2872
Nut, hex, 3/8"	11	2873
Bolt, 1/2" x 2 1/2"	4	287
Washer, lock, 1/2"	4	2471
Nut, hex, 1/2"	4	2473
Screw, sheet metal	4	2476
Washer, flat, 1/4"	4	2457
Bolt, hex, 1/4" x 1/2"	2	1911
Washer, lock, 1/4"	2	2458
Bolt, hex, 3/8" x 1/2"	3	1913
Nut, lock, 3/8"	3	2874
Screw, self tap, 1/4" x 3/4"	12	3299
Nut, lock, 1/4"	12	2316
Cotter Pin, 1/4" X 3"	2	2475

	Qty	Part #
9000GLU SYSTEM, COMPLETE	1	391
<b>A</b> Pivot Arm, lower(L,R) side, steel, 9000	2	367
<b>B</b> Pivot Arm, upper, (L), steel, 9000	1	362
Pivot Arm, upper, (R), steel, 9000	1	366
<b>C</b> Pivot Mount Assy, underbody, (L)	1	380
Pivot Mount Assy, underbody, (R)	1	382
<b>D</b> Pivot Mount, (L,R)	2	385
<b>E</b> Spring, 15 coil underbody, (L)	1	383
Spring, 15 coil underbody, (R)	1	384
<b>F</b> Shaft, pivot mount, 9000 (L,R)	2	2130
<b>G</b> Bearing, hex, 7/8"	2	3346
<b>H</b> Rear Cross Piece	1	360
<b>J</b> Pivot Arm Rest	2	952
<b>K</b> GL Control Box, 7000/9000, Complete	1	780
<b>L</b> Handle, Crank	1	1110
Spring Clip	1	787
Brake Strap	1	786
Chain, # 40 x 10'	1	793
Chain, Master Link, # 40	1	272
<b>M</b> Bearing Plate, Universal	2	3270
<b>N</b> Bearing, Flange, 3/4"	2	145
<b>O</b> Shaft/Sprocket Assembly	1	2403
<b>P</b> Roller Bar, Extruded Aluminum	1	2365
<b>Q</b> Chain Guard, Complete	1	2083
(See Pg. 38 for details)		
<b>R</b> Wind Deflector	1	1647

# HEAVY DUTY TRUCK DIVISION WARRANTY

## SATISFACTION GUARANTEE

Donovan Enterprises, Inc. guarantees customer satisfaction of all Donovan Covering Systems. Customer satisfaction will be assured as outlined in Donovan's Warranty Statement.

## WHAT IS COVERED?

- Donovan Enterprises, Inc. warrants for a period of 90 days from date of delivery, all Covering System parts against defects in material and operation, and for a period of one year against defects in workmanship.
- This warranty is effective if the product is installed according to Donovan's published installation instructions and used for the systems intended purpose.
- Tarps are warranted for a period of 90 days against defects in workmanship.
- Donovan Enterprises' obligation to customer satisfaction under this warranty begins with repair, or at its option, replacement of any part under warranty. If within the first 90 days of delivery, every option to satisfy the customer's needs has been exhausted, the distributor's original purchase price will be refunded upon return of undamaged products that have not been altered, modified, or subjected to misuse or negligence.

## WHAT IS NOT COVERED?

- Donovan Enterprises, Inc. shall not be liable or responsible to supply or pay labor to replace any part found defective, nor shall it be liable for damages of any kind or nature to person, product, property, or other consequential damages.
- This warranty does not apply to non-standard covering system designs or applications
- Damage caused by improper installation, operation, or abuse is not covered
- Damage caused by chemical or environmental exposure
- Damage due to the lack of the proper circuit breaker
- Consequential losses or damage to equipment or materials
- Consequential expenses such as labor, delays, vehicle downtime, loss of revenue, etc.

## REPAIR / REPLACEMENT PROCEDURE

- All returns for warranty purposes must be assigned a return authorization number prior to return of defective product and shipping must be prepaid by the distributor / customer to Donovan Enterprises, Inc., Stuart, Florida, or other Donovan shipping point. Donovan will pay return freight to distributor upon receipt of defective part. If express freight is requested, customer will pay the additional freight charge above the ground rate.
- Donovan Enterprises, Inc. retains final judgment that a product under warranty is, in fact, defective.
- Donovan Enterprises, Inc.'s products are sold without any express or implied warranty except as set forth above.
- No person is authorized to modify the preceding warranty in any manner.

## Direct Drive Motor Warranty Policy

### What is the warranty on Donovan's Direct Drive motor?

Donovan's Direct Drive Motor is covered by a **3-year prorated warranty**.

**1<sup>st</sup> year** - Within the first year the motor is covered 100%. If there is a problem within the first year of the motor's life, Donovan will replace your motor and pay the freight to send the replacement motor back to you.

**2<sup>nd</sup> year** – If there is a problem within the second year of the motor's life, Donovan will issue a 50% credit of the original cost of the motor.

**3<sup>rd</sup> year** – If there is a problem with a Donovan motor in the third year of the motor's life, Donovan will issue a 25% credit of the original cost of the Motor.

### What is not covered?

- Warranty is **void** if the motor end bell has been opened – No Exception.
- Warranty is **void** if the gearbox has been cracked open – No Exception.
- Damage caused by improper use, installation, or abuse.
- Damage due to use of improper circuit breaker or lack of circuit breaker.
- Damage caused by chemical exposure.
- Any and all consequential damages. (i.e. damage to equipment or materials, delays, downtime, loss of revenue, etc.)

### How does Donovan Handle Freight Charges?

- The customer is responsible for shipping the malfunctioning part to Donovan's Facility (in Stuart, Florida) for inspection. If the part is covered under Warranty, and a replacement motor needs to be shipped out, Donovan will pay the freight to return the replacement motor via UPS Ground. If the motor turns out not to be covered under the warranty, Donovan will return the motor to the customer at their request and at their expense. **NO HANDLING CHARGES WILL APPLY.**

### When does the motor's warranty start?

- The motor's warranty starts from the day it is shipped from Donovan Enterprises or from the day the warranty is registered with Donovan; by sending in a warranty registration card within 60 days of purchase.

### What do I do if my motor malfunctions?

- First, record the motor serial number and call Donovan Enterprises at 800-327-8287 for an RGA#. A Donovan representative will be able to use your motor serial number to inform you of the warranty available on that particular motor.
- If the motor is within the three year period, a Donovan representative will ask a few questions to try to diagnose the motor's problem, then issue an RGA#.
- In order to get a credit for the bad motor, you will need to send the malfunctioning motor to Donovan's facility in Stuart, Florida for inspection.
- Donovan will send out a replacement motor immediately, and charge the customers account for the motor and the freight to ship the motor. This charge will be credited as soon as the faulty motor is received at our facility and it is determined to meet all warranty requirements.
- When the faulty motor is received at Donovan's facility: We will determine if it meets warranty requirements, then call the customer and inform them whether they will receive credit for the replacement motor.
- If the motor meets warranty requirements, the replacement motor's warranty will still have whatever warranty was left on the original motor. If the Motor was denied warranty, then the replacement motor's warranty will start from the day we shipped it to the customer.
- Donovan reserves the right to replace a warranted motor or gearbox with a repaired or remanufactured motor or gearbox of same or newer condition.
- **Donovan's Winch motor warranty is 90 days full replacement.**



Thank you for purchasing the

**9000GLU**



Donovan Enterprises • 2951 S.E. Dominica Terrace • Stuart, Florida 34997

1-800-327-8287

# 9000GLU



## Installation Instructions



Donovan Enterprises • 2951 S.E. Dominica Terrace • Stuart, Florida 34997  
1-800-327-8287