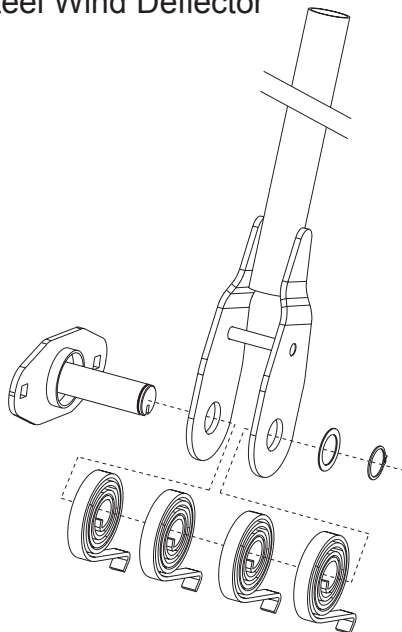


Hammer (Electric Direct Drive)

Premium steel covering system for dump bodies up to 23 feet long.

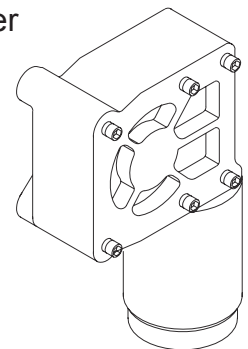
Hammer Standard Features

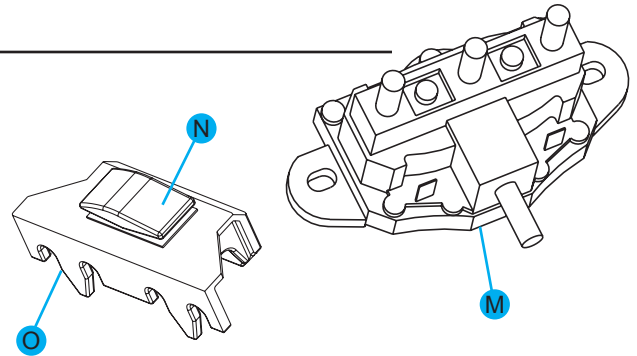
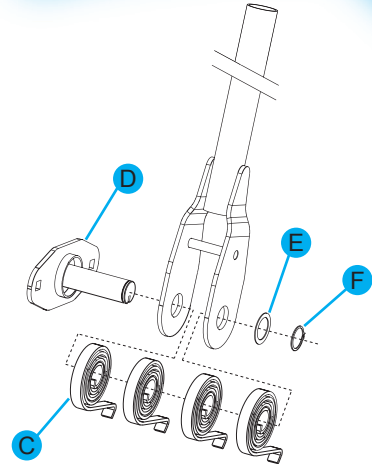
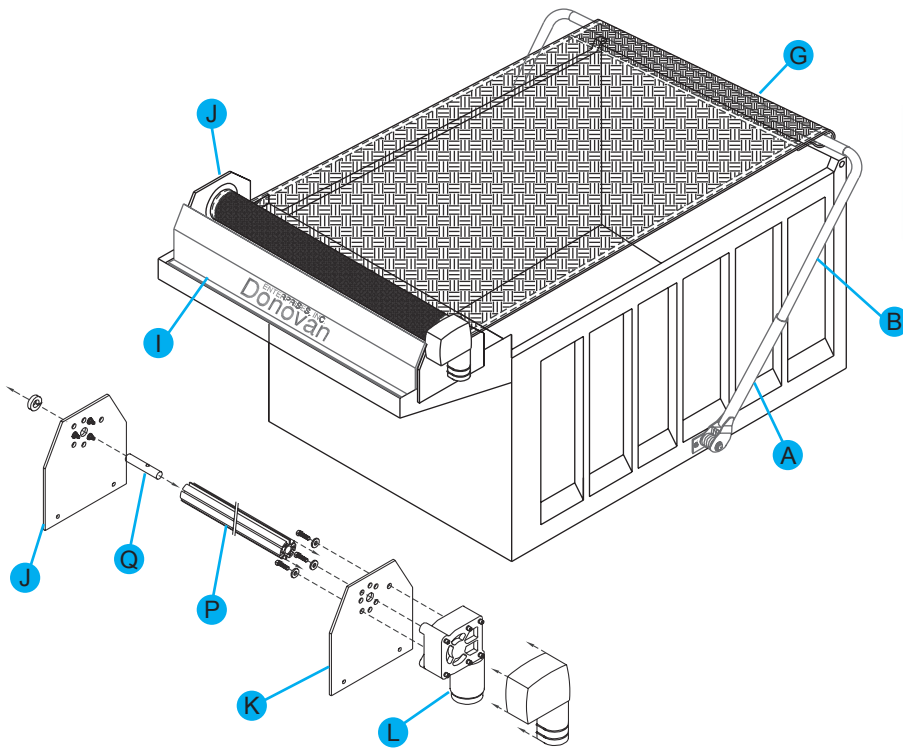
- One size fits up to 23ft. bodies.
- 1.69" Round Tube "Easy-Off" Pivot Arms
- 8 Flat Coil Torsion Springs
- Triple Bend Steel Wind Deflector



Additional Features

- 12 volt Direct Drive Motor
- Cab Mounted Control Switch
- Auto Reset Circuit Breaker
- 3-Year Full Replacement Motor Warranty
- Wind Deflector
- Chrome Motor Cover





HAMMER System, Complete

	Qty	Part #
A Pivot Arm, Lower Assy., 1.69"	1	2942
B Pivot Arm, Upper, 1.315"	2	3688
C Spring, Coil Torsion	2	3691
D Pivot Arm Mounting Assy.	8	2416
E Shim, 1.25" x .047"	2	1787
F Retaining Ring	2	2833
G Rear Cross Piece, 1.69" round steel	2	2834
Pivot Arm Rest	1	3689
I Wind Deflector (2 pieces)	2	3694
J Universal Bearing Plate w/ bearing	1	1647
K Universal Bearing Plate	1	3678
L Motor Direct Drive	1	3270
Chrome Motor Cover	1	61L
Wire, 60', 6 gauge	1	4278
Durabuilt Switch Kit	1	1898
40 Amp circuit breaker	1	1495
M Solenoid	1	1856
N Rocker Switch	1	1464
O Rocker Switch Bracket	1	1897
P Roller Bar, aluminum	1	1532
Q Extension Shaft, 3/4" x 4"	1	2365
	1	2838

Mounting Hardware

Description	Qty	Part #
Bolt, hex, 3/8" x 1 1/2"	8	2464
Washer, flat, 3/8"	8	2875
Nut, hex lock, 3/8"	8	2874
Bolt, allen head, 1/4" x 1 1/4"	2	3954
Nut, tee, 1/4"	2	1915
Bolt, hex 1/2" x 1 1/2"	4	2883
Washer, flat, 1/2"	4	2878
Nut, hex lock, 1/2"	4	2877
5mm Allen Wrench	1	3556
Bolt, carriage, 5/16" x 2 1/2"	2	3237
Nut, hex lock, 5/16"	4	2868
Washer, flat, 1/2"	4	2867
Rubber Bumper	2	2948
5/16" x 1" Carriage Bolt	2	2460
5/16" x 3/4" Bolt	3	2418
Sheet metal screws #10 x 3/8"	2	3709
3/4" Shaft Collar	1	450