

Donovan Enterprises
“5000XGL”
CAB LEVEL OPERATED TARPING SYSTEM

This truck covering system is to be known as Donovan Enterprises model 5000XGL. This system can be used on 10 to 18 foot bodies.

SYSTEM WEIGHT

The complete 5000XGL as packaged weighs 120 lbs. and comes in two boxes.

GROUND LEVEL DRIVE SYSTEM

Covering system to be operated with a ground level control box mounted on the side wall of the dump body, driver's side. The control box has a shaft that rotates on a bushing with a threaded disengaging crank handle. The crank handle is mounted on control box shaft with synthetic brake pad acting as an intermediate barrier between the braking surface and rotation shaft. The brake must provide enough force to stop the movement of the pivot arms when operator's hand is not moving the handle at any point throughout the pivot arm's full range of motion. The control box sprocket is mounted inside of control box housing and the roller sprocket is mounted to one end of the roller bar. Both sprockets are to drive #40 chain.

ROLLERBAR ASSEMBLY

Roller bar assembly is a one-piece steel 1" tube with a 3/4" steel shaft welded into one end, 96" in length. Roller bar has a 1 1/2" inside diameter. 1/8" steel bearings plates with 1 1/2" diameter, self-aligning, sealed flange bearings mount on cab shield to support right and left roller bar sections.

Optional Extruded Aluminum Roller Bar Assembly is a one-piece extruded aluminum design, 96 inches in length. Roller bar has a 1 1/2" inside diameter. The extrusion pattern is such that a tarp may be installed using a spline, sheet metal screws or through bolts.

WIND DEFLECTOR ASSEMBLY

Optional wind deflector is constructed of 2 pieces of 16 gauge galvanized steel, and adjustable to accommodate various widths of roller bar. Wind deflector to be mounted on cab shield in front of roller bar assembly to facilitate airflow over tarp.

PIVOT ARM AND TORSION SPRING ASSEMBLY

The pivot arms are constructed in a 2-piece configuration. The lower pivot arms are straight, 96" long, and constructed of 1 1/4" - 14 gauge galvanized steel tubing. The upper arms have two bends, 60" long (before being bent), and are constructed of 1" - 14 gauge galvanized steel tubing. The upper arm is bent to allow for insertion of arms into the rear cross piece. The rear cross piece is straight, 96" long, and constructed of 1 1/4" 14-gauge steel tubing. The heavy duty silicone chrome torsion springs are .625" wide and have a coil diameter of 3.46". Each unit uses 6 springs (3 per arm), mounted side by side within the lower paddles of the lower arm assembly. Pivot arm mounting brackets are constructed of steel with 1 1/2" shaft. This shaft supports the lower pivot arm and spring assembly.

FINISH

All steel components must be finished with a galvanized coating.

HARDWARE

Covering system is to be supplied with all of the nuts, bolts, mounting brackets, installation instructions and miscellaneous hardware necessary to install the mechanism onto the truck body. All hardware is of grade 5 or higher.

PRODUCT DIAGRAMS

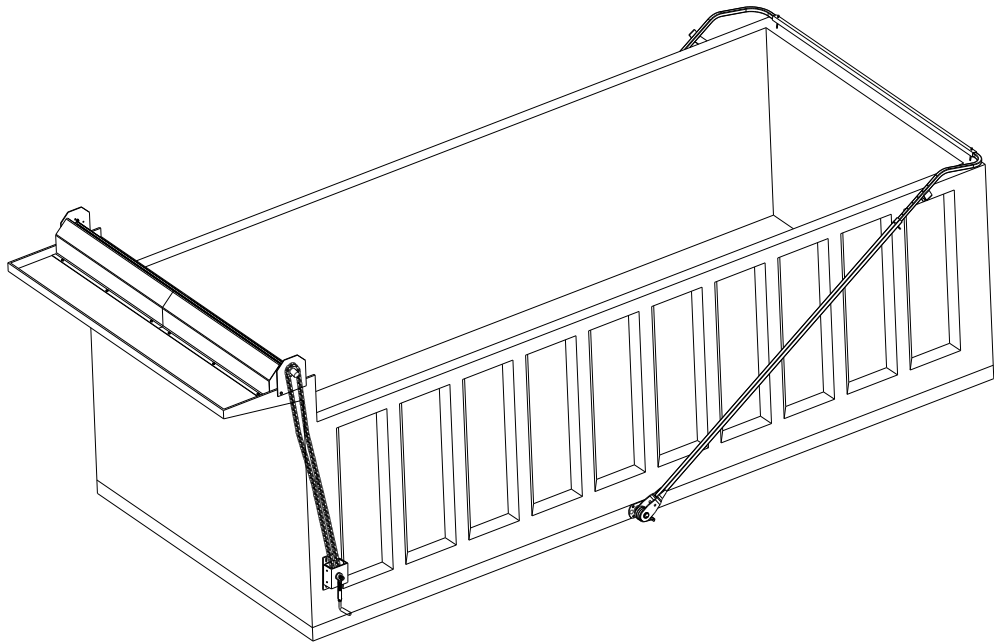


Diagram 1: System mounted on truck with optional wind deflector.

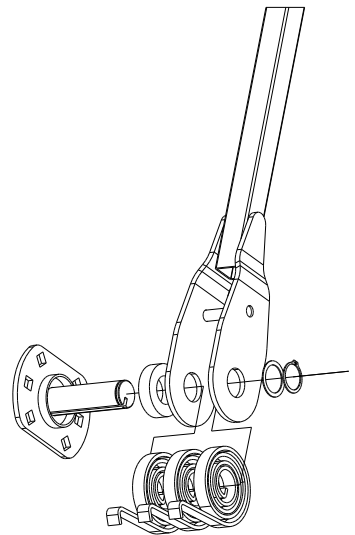


Diagram 2: Cab level crank handle assembly.

Diagram 3: Lower pivot arm, pivot arm mounting bracket and springs.