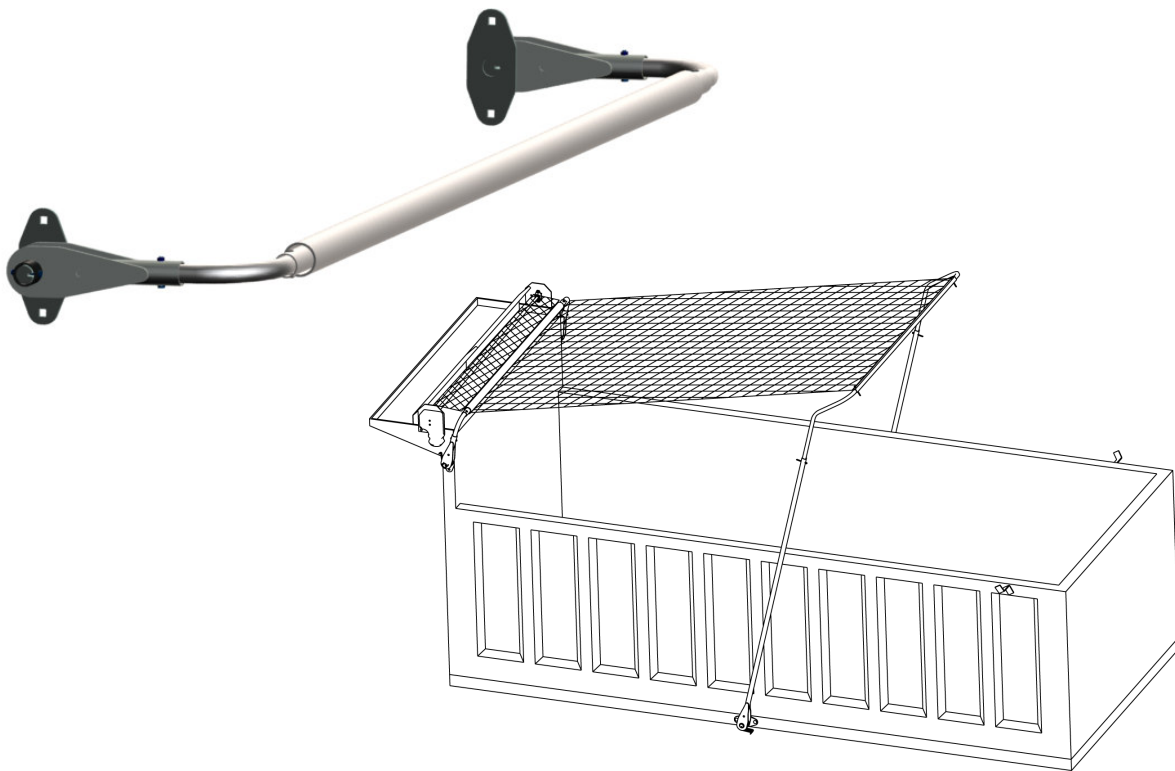


SPRING TRAP

INSTALLATION INSTRUCTIONS



JULY 2010

**Donovan Enterprises, 3353 SE Gran Park Way, Stuart FL 34997
800-327-8287**

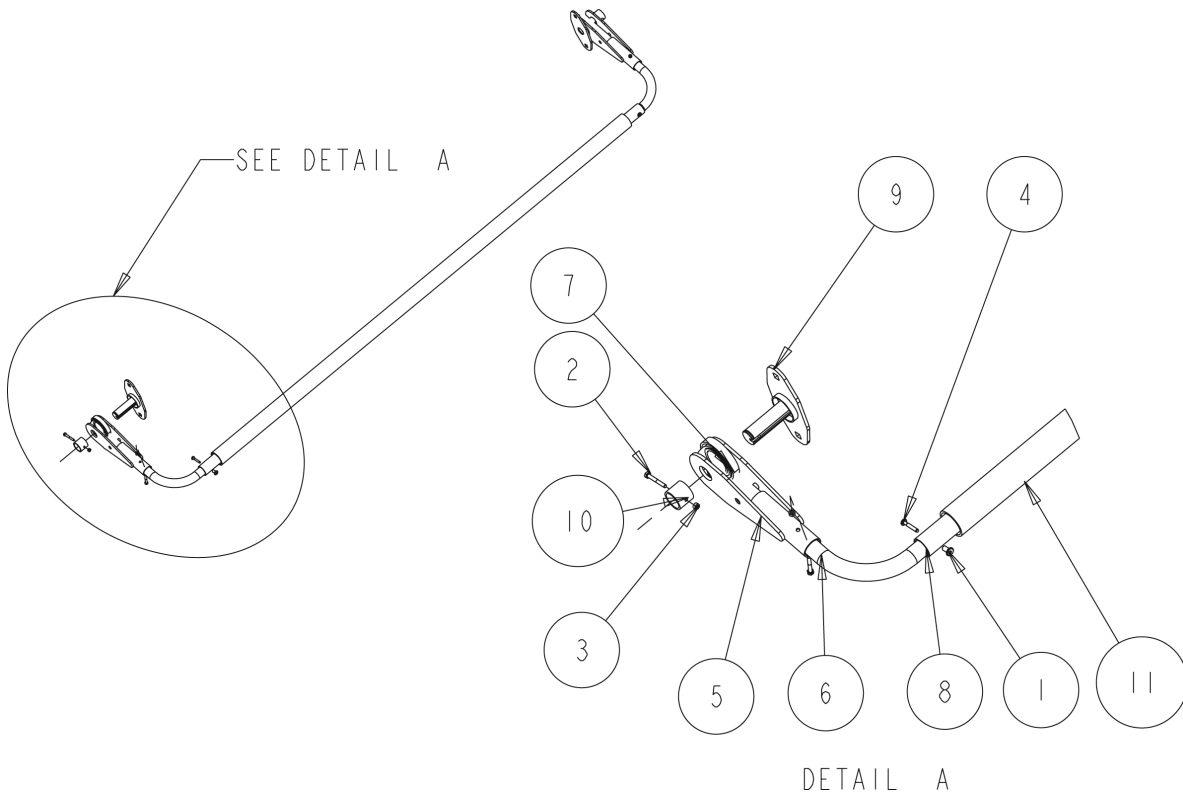
www.donovan-ent.com

BILLOW BAR INSTALLATION INSTRUCTIONS

BEFORE INSTALLATION BEGINS

- READ AND UNDERSTAND INSTALLATION INSTRUCTIONS.
- UNPACK SYSTEM AND CHECK ALL PARTS AGAINST PACKING LIST.

SPRING TRAP COMPONENTS

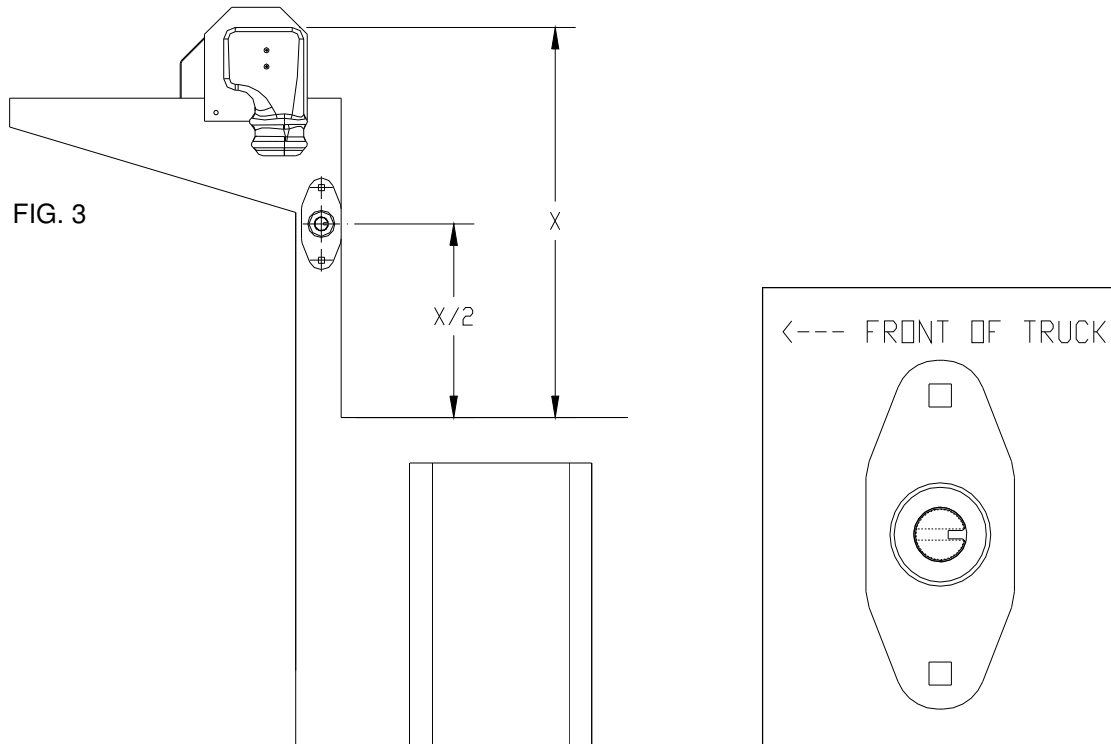


| ITEM | PART # | DESCRIPTION | QTY |
|------|--------|----------------------------|-----|
| 1 | 1915 | 1/4-20 X 7/16 T-NUT | 2 |
| 2 | 3892 | 1/4-20 X 2" BOLT | 4 |
| 3 | 3897 | 1/4-20 CENTER LOCK NUT | 4 |
| 4 | 3898 | 1/4-20 X 1.575 JOINT BOLT | 2 |
| 5 | 3928 | ARM WELMENT | 2 |
| 6 | 3975 | BENT ARM EXTENSION | 2 |
| 7 | 3964 | TORSION SPRING | 2 |
| 8 | 3933 | TARP BAR | 1 |
| 9 | 3936 | TORSION SPRING PIVOT MOUNT | 2 |
| 10 | 3952 | ARM RETENTION RING | 2 |
| 11 | 3958 | ROLLER TUBE | 1 |

BILLOW BAR INSTALLATION INSTRUCTIONS

Mounting the Pivot Mount

1. In general, the billow bar is to be mounted to the driver and passenger sides of the truck head assembly. The location is approximately halfway between the top of the side rails and the top of the Direct Drive Motor (DD Motor). See Figure 3 below for the correct mounting location.



Orientation of Pivot Mounts

2. Line up center of pivot mount with dimension as shown in Figure 3.

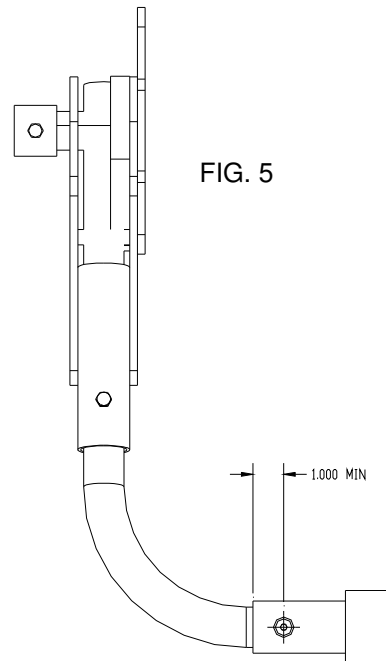
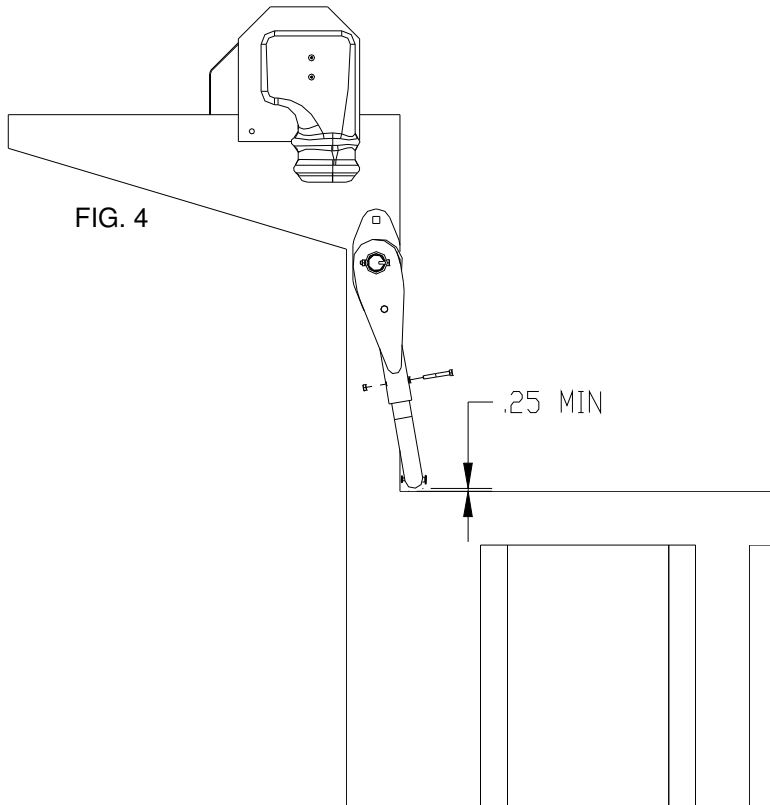
NOTE: If welding into position, skip step 3.

3. Use pivot mount as guide to mark holes for mounting.
4. Bolt or weld pivot mount into position.

NOTE: For the following steps, assembly is easiest to complete without the flat coil spring installed. This may be installed later.

Lower Arm Assembly

1. Attach the arm weldment (#5) and arm retaining ring (#10). Use part numbers 2 and 3 to fix into location.
2. Insert the long end of the bent arm extension (#6) into the arm weldment (#5). Trim the bent arm extension (#6) until the resting position of the assembly is similar to Figure 4. It is important that the bottom of the billow bar is approximately 1/4-inch from the top of the container.



Lower Arm Assembly (Continued)

3. After the bent arm extension (#6) is trimmed to desired length, copy length on the opposite piece.
4. Add the tarp bar (#8) to the assembly, and trim to length (if necessary).
5. Attach opposite pivot mount (#9), arm weldment (#5), arm retaining ring (#10) and bent arm extension (#6).
6. Center tarp bar (#8) and cross drill $\text{Ø}.250$ through the tarp bar and bent arm extension (#6) minimum 1.0 inches from the edge of the tarp bar (See Figure 5 above).

Final Assembly

1. Disassemble the passenger side arm weldment (#5) and bent arm extension.
2. Remove driver side arm retaining ring (#10).
3. Slide driver side half of the assembly until the spring (#7) can be installed properly into the arm weldment.
4. Install spring (#7) and slide back into position and fasten into location with arm retaining ring (#10).
5. Slide PVC roller tube (#11) over drivers side assembly.

NOTE: Make sure tarp is resting below Billow Bar assembly prior to completing next step.

6. Assembly passenger side spring (#7) and arm weldment (#5) to the assembly. Fasten into

